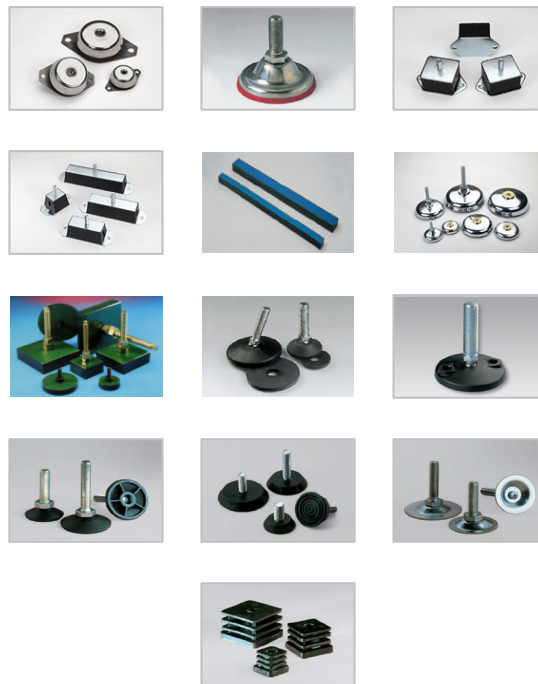


Machine Mounts

Mounts: designed to be high-performing, stable, economical and visually attractive.

Their stability under load, versatility and favourable price mean that they are suitable for all kinds of machinery and equipment, especially on rough floors.

Our mounts enable machines to stable and level, whilst also absorbing vibrations and noise.



Vibration Reducing

- ✓ Robust vibration reduction through elastic deformation of the damping disc.

Adjustable for inclines






- ✓ For sloping or rough floors.

Independent foot adjustment


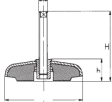

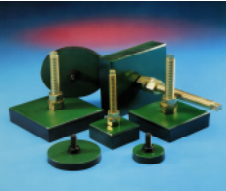
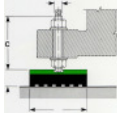


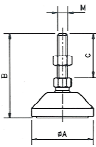
- ✓ Easy levelling and re-adjustment

Dimensions you will see on the data sheets


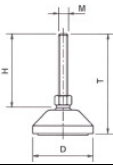

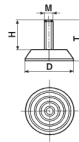

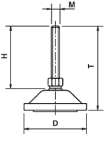
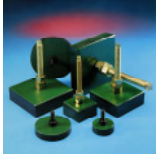
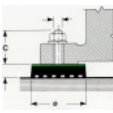
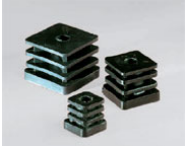
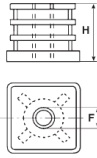
Anti-Vibration Mounts

| Type | Characteristics | Carrying capacity kg | Fields of Application |
|--|---|---|---|
| SRuB / SRuB CD / SRuB T /SRuB-INOX  | Good transversal flexibility, Oil-resistant INOX: Resistant to atmospheric influence | 200 – 600 | Low frequencies (8-12Hz) Petrol and Diesel engines, electric motors, generators, engine compressors, motor-pumps, refrigerators, tractors cabins, agricultural machines and various devices that contain or are subject to low frequencies INOX: food industry machines, marine sector and for an ambient rust and mildew presence |
| SReB  | vertical and transversal flexibility oil-resistant, | 500 – 1600 | Electrical fans, motor pumps, compressors, machine tools |
| SQB Long – Life  | Oil and heat resistant | 650 – 950 | Vehicle suspension springs, conveyor systems, electric engines |
| SRu-Inox  | High performance, resistant to corrosion and stress, aesthetic and functional properties retained, Adiprene sole: resistance to slide and acids, Vibration and noise damping | 700 – 1200 N.B. bigger mounts means less load to carry! | Frequently used in the food, chemical and pharmaceutical industries for cleanliness and hygiene reasons. Also suitable for floors often treated with detergents |
| SBarren  | High work loads | 14 Kg/cm ² | Generating set, power hammer, machine tools with high operating frequencies |

Anti-vibration/adjustable Mounts

| Type | Characteristics | Carrying capacity kg | Fields of Application |
|--|---|--|---|
| ARu  | Adjustable with a spanner. Oil resistant, non-skid  | Max. dynamic load: 320 – 1450 Max. static load: 900 – 3600 | Machine tools Presses |
| ARu2  | Simple and quick to level. Consists of two types of rubber; hard rubber for higher load carrying capacity, and elastic rubber for noise reduction. Oil resistant, non-skid | Max. dynamic load: 400 – 1800 Max. static load: 1200 – 6000 | Machine tools Presses |
| AQ  | Adjustable with a spanner. Vibration control  | 240 - 2500 | Machines, workbench, shelves |
| NRu  | Capable of tilting (revolving screw), solid, cost-effective | 500 - 1500 | Workbenches, shelves, Commercial structural sections in aluminium |
| NRuB  | Capable of being anchored to the floor, Capable of tilting (revolving screw) solid, cost-effective  | 1000 – 1500 | Workbenches shelves, Commercial structural sections in aluminium |

Light Mounts

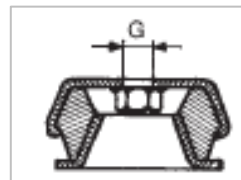
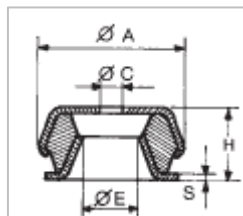
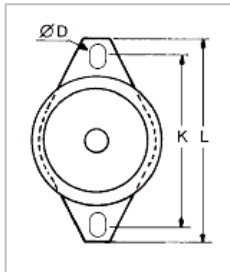
| Type | Characteristics | Carrying capacity kg | Fields of Application |
|---|---|----------------------|--|
| LRud  | Revolving pin  | 150 – 200 | Metal shelves, Shop furnishings, Metal furniture |
| LRu  | Fix pin  | 150 – 200 | Desks and office furniture, Metal cupboards, Exhibition equipment, Hospitality tables Chairs |
| L  |  | 160 – 200 | Metal shelves, Exhibition equipment, Shop furnishings, Metal furniture |
| LQ  | Anti-vibration  | 78 - 390 | Machines, Work benches, Engines |
| LQI  | For insides  | | Office furniture, Metal furniture, |

Anti-vibration Mounts

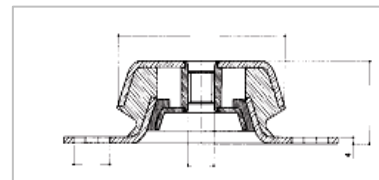
Type SRuB



| Material CD / T | Material T-Inox |
|---|--|
| NBR 55°Shore A (±5); Iron zinc plated | Neoprene Rubber 55°Shore A (±5); Metal parts in stainless steel |



Typ CD :
with screw nut



Typ T: with
contra buffer

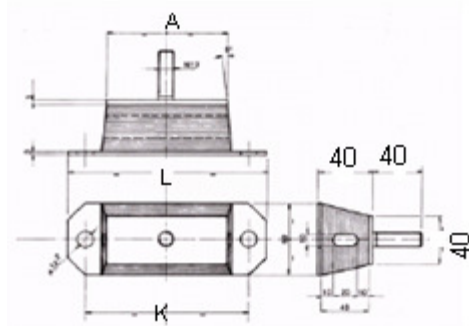
| Type | ØA mm | ØC mm | ØE mm | Ø D mm | H mm | K | L | S | G | Static load kg |
|------------------------|----------|----------|----------|--------|---------|-----|-----|---|------|-------------------|
| SRuB105 | 62 | 10.2 | 25 | 8.2x4 | 30 | 85 | 100 | 2 | - | 200 |
| SRuB106 | 92 | 16.2 | 42 | 10.2x6 | 42 | 110 | 130 | 3 | - | 350 |
| SRuB107 | 115 | 24.2 | 60 | 16.2x9 | 48 | 160 | 190 | 4 | - | 600 |
| SRuB 105-CD-M10 | 62 | - | 25 | 8.2x4 | 30 | 85 | 100 | 2 | 10MA | 200 |
| SRuB 105-CD-M12 | | | | | | | | | 12MA | |
| SRuB 106-CD-M10 | 92 | - | 42 | 10.2x6 | 42 | 112 | 130 | 3 | 10MA | 350 |
| SRuB 106-CD-M12 | | | | | | | | | 12MA | |
| SRuB 106-CD M14 | | | | | | | | | 14MA | |
| SRuB 106-CD-M16 | | | | | | | | | 16MA | |
| SRuB 107-CD-M16 | 115 | - | 60 | 16.2x9 | 48 | 160 | 190 | 4 | 16MA | 600 |
| SRuB 107-CD-M18 | | | | | | | | | 18MA | |
| SRuB 107-CD-M24 | | | | | | | | | 24MA | |
| SRuB 105 T-M10 | 62 | 14.5 | 25 | 8.2x4 | 30 | 85 | 100 | 2 | 10MA | 200 |
| SRuB 106-T-M12 | 92 | 20.5 | 44 | 10.2x6 | 42 | 110 | 130 | 3 | 12MA | 350 |
| SRuB 106-T-M14 | | | | | | | | | 14MA | |
| SRuB 106-T-M16 | | | | | | | | | 16MA | |
| SRuB 107-T-M16 | 115 | 22.5 | 61 | 16.2x9 | 48 | 160 | 190 | 4 | 16MA | 600 |
| SRuB 107-T-M18 | | | | | | | | | 18MA | |
| SRuB 105/T-Inox | 62 | 14.5 | 25 | 8.2 | 30 | 85 | 100 | 2 | 10MA | 200 |
| SRuB 106/T-Inox | 92 | 20.5 | 44 | 10.2 | 42 | 110 | 130 | 3 | 16MA | 350 |
| SRuB 107/T-Inox | 115 | 22.5 | 61 | 16.2 | 48 | 160 | 190 | 4 | 18MA | 600 |

Anti-vibration Mounts

Type SReB



| Material |
|------------------------------|
| Styrol-Butadien-Rubber (SBR) |
| Hardness: 60°shore A (±5) |
| Zinc plated iron |

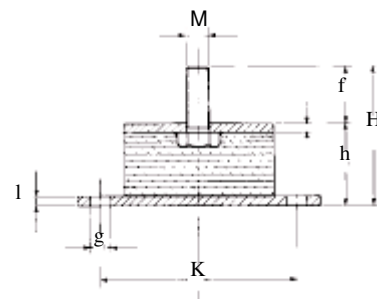
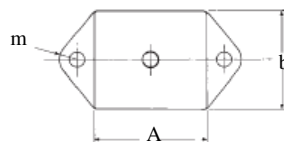


| Type | L mm | A mm | K mm | Max. load kg |
|----------|------|------|------|--------------|
| SReB 101 | 115 | 50 | 85 | 500 |
| SReB 102 | 165 | 100 | 135 | 1200 |
| SReB 103 | 215 | 150 | 185 | 1400 |
| SReB 104 | 265 | 200 | 235 | 1600 |

Type SQB Long Life



| Material |
|--|
| NBR |
| Hardness: 40/45°shore A or 60/65°shore A |
| Zinc plated iron |



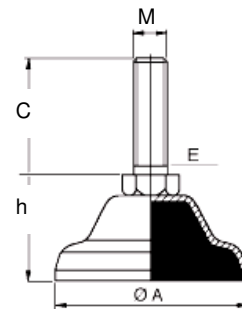
| Type | H | b | K | A | h | f | g | M | i | l | m | Max. load kg | |
|---------------|---------------|----|----|-----|----|----|----|------|------|---|---|--------------|-----|
| Long Life 100 | 40/45 shore A | 83 | 70 | 105 | 80 | 53 | 30 | 10.5 | M 12 | 5 | 5 | 12.5 | 650 |
| | 60/65 shore A | | | | | | | | | | | | 950 |

Anti-vibration Mounts

Type SRu-INOX



| Material |
|----------------------------------|
| Adiprene Hardness: 80°shore A |
| AISI 304 INOX-steel |



N.B. A bigger mount means less load to carry

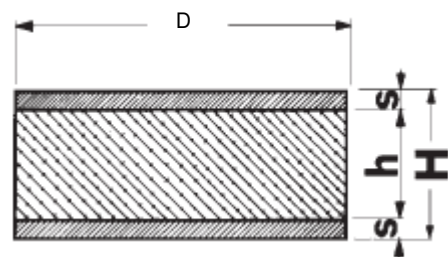
| Type | ØA mm | h mm | M mm | C mm | E mm | Max. load kg |
|----------|-------|------|------|------|------|--------------|
| INOX 40 | 40 | 27 | M 8 | 30 | 13 | 700 |
| INOX 65 | 65 | 40 | M 12 | 50 | 19 | 1200 |
| INOX 90 | 90 | 50 | M 16 | 60 | 24 | 1100 |
| INOX 110 | 110 | 60 | M 20 | 70 | 30 | 1000 |

Typ
pe
SB

arren



| Material |
|---|
| Synthetic rubber Hardness: 65°shore A (±5) |
| Metal parts are blue lacquered |



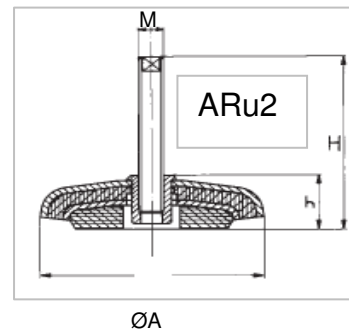
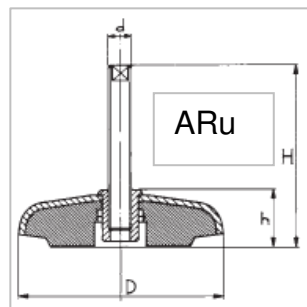
| Type | D mm | h mm | H mm | S mm | Länge mm | Max. load kg |
|---------------|------|------|------|------|----------|-----------------------|
| SBarren 50 | 50 | 30 | 50 | 10 | 1000 | 14 kg/cm ² |
| SBarren 60 | 60 | 40 | 60 | | | |
| SBarren 70 | 70 | | | | | |
| SBarren 80 | 80 | | | | | |
| SBarren 100/6 | 100 | 36 | | 12 | | |

Anti-vibration/adjustable Mounts

Type ARu/ARu2



| Material |
|---|
| ARu: Rubber: Hardness: 60°shore A (±5) |
| ARu2: Rubber : Hardness:1.Layer: 60°shore A (±5) 2.Layer: 80°shore A (±5) |
| Zinc plated steel |

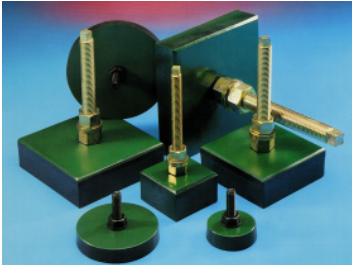


| Type | ØA mm | M | H mm | h | Max. load kg | |
|-----------|-------|------|------|----|--------------|--------|
| | | | | | dynamic | static |
| ARu 120 | 80 | M 12 | 80 | 27 | 320 | 900 |
| ARu 120/1 | 110 | M 14 | 125 | 32 | 550 | 1500 |
| ARu 121 | 140 | M 16 | 130 | 39 | 750 | 2000 |
| ARu 122 | 200 | M 20 | 175 | 62 | 1450 | 3600 |

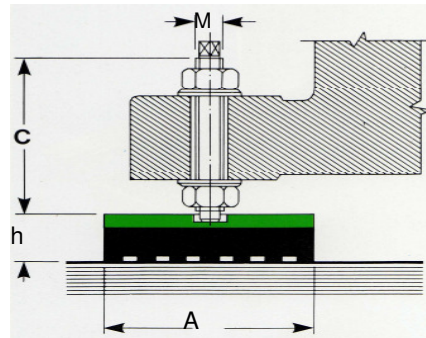
| Type | ØA mm | M | H mm | h | Max. load kg | |
|---------|-------|------|------|----|--------------|--------|
| | | | | | dynamic | static |
| ARu2 8 | 80 | M 12 | 80 | 27 | 400 | 1200 |
| ARu2 11 | 110 | M 14 | 125 | 32 | 650 | 1900 |
| ARu2 14 | 140 | M 16 | 130 | 39 | 900 | 2850 |
| ARu2 20 | 200 | M 20 | 175 | 62 | 1800 | 6000 |

Anti-vibration/adjustable Mounts

Type AQ



| Material |
|---------------------|
| Synthetic Rubber |
| Zinc plated steel |



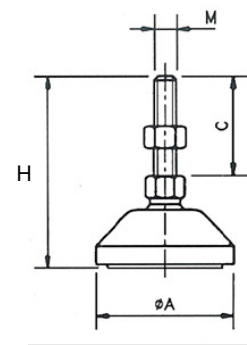
| Type | h | A | C | M | Max. load kg |
|--------|----|-----------|-----|------|--------------|
| AQ 60 | 35 | 60 x 60 | 120 | M 12 | 240 |
| AQ 80 | | 80 x 80 | | | 450 |
| AQ 100 | | 100 x 100 | 130 | M 16 | 600 |
| AQ 120 | | 120 x 120 | | | 1000 |
| AQ 140 | | 140 x 140 | 170 | M 20 | 1500 |
| AQ 160 | | 160 x 160 | | | 2500 |

Anti-vibration/adjustable Mounts

Type NRu



| Material |
|---|
| Base: Polyamid, strengthened with glassfibre; |
| Screw: AVP, supplied without nut; |
| upon request Inox AISI 304; |
| Disc: Thermoplastic rubber |



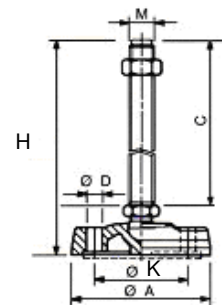
| Type | | ØA mm | M | H mm | C mm | Max. load kg | |
|---------|----|-------|------|------|------|--------------|------|
| NRu 40 | 1 | 40 | M 8 | 74 | 40 | 500 | |
| | 2 | | | 98 | 65 | | |
| | 3 | | M 10 | 93 | 60 | 800 | |
| | 4 | | | 96 | 63 | | |
| | 5 | | M 14 | | 112 | | 75 |
| | 6 | | | M16 | 112 | | 75 |
| NRu 50 | 1 | 50 | M 8 | 74 | 40 | | 500 |
| | 2 | | | 98 | 65 | | |
| | 3 | | M 10 | 93 | 60 | 800 | |
| | 4 | | | 96 | 63 | | |
| | 5 | | M 14 | | 112 | | 75 |
| | 6 | | | M 16 | 112 | | 75 |
| NRu 80 | 1 | 80 | M 8 | 72 | 40 | | 1000 |
| | 2 | | | 96 | 65 | | |
| | 3 | | M 10 | 91 | 60 | 1200 | |
| | 4 | | | 94 | 63 | | |
| | 5 | | M 14 | | 110 | | 75 |
| | 6 | | | M 16 | 110 | | 75 |
| NRU 100 | 7 | 100 | M 18 | 118 | 75 | | 1200 |
| | 8 | | M 20 | 173 | 130 | | |
| | 9 | | M 24 | 187 | 144 | | |
| | 10 | | | 220 | 177 | | |
| | 11 | | M 16 | 105 | 62 | | |
| | 12 | | | 175 | 132 | | |
| NRu 120 | 7 | 120 | M 18 | 118 | 75 | 1500 | |
| | 8 | | M 20 | 173 | 130 | | |
| | 9 | | M 24 | 187 | 144 | | |
| | 10 | | | 220 | 177 | | |
| | 11 | | M 16 | 105 | 62 | | |
| | 12 | | | 175 | 132 | | |

Anti-vibration/adjustable Mounts

Type NRuB



| Material |
|---|
| Base: Polyamid, strengthened with glassfibre; |
| Screw: AVP, supplied without nut; |
| upon request Inox AISI 304; |
| Disc: Thermoplastic rubber |



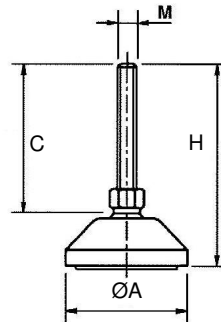
| Type | ØA mm | M | H mm | ØK | C mm | ØD | Max. load kg | |
|----------|-------|------|------|----|------|------|--------------|-----|
| NRuB 80 | 80 | M 8 | 72 | 54 | 40 | 9 | 1000 | |
| | | | 96 | | 65 | | | |
| | | | 91 | | 60 | | | |
| | | M 12 | 94 | | 63 | | | |
| | | | M 14 | | 75 | | | |
| | | | M 16 | | 75 | | | |
| NRuB 100 | 100 | M 18 | 118 | 74 | 75 | 12.5 | 1200 | |
| | | | 173 | | 130 | | | |
| | | | 187 | | 144 | | | |
| | | M 24 | 220 | | 177 | | | |
| | | | M 16 | | 105 | | | 62 |
| | | | | | 175 | | | 132 |
| NRuB 120 | 120 | M 18 | 118 | 98 | 75 | 12.5 | 1500 | |
| | | | 173 | | 130 | | | |
| | | | 187 | | 144 | | | |
| | | M 24 | 220 | | 177 | | | |
| | | | M 16 | | 105 | | | 62 |
| | | | | | 175 | | | 132 |

Light Mounts

Type LRuD



| Material |
|--------------------------|
| Base: Black Nylon |
| Threaded screw: iron 4.8 |



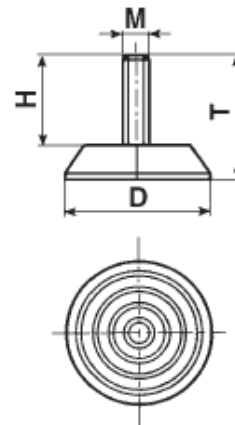
| Type | ØA mm | M | C mm | H mm | Max. load kg |
|------|-------|------|------|------|--------------|
| LRuD | 35 | M 8 | 40 | 55 | 150 |
| | | | 50 | 65 | |
| | | M 10 | 40 | 57 | |
| | | | 60 | 77 | |
| | 40 | M 8 | 40 | 58 | 190 |
| | | | 50 | 68 | |
| | | M 10 | 40 | 58 | |
| | | | 60 | 79 | |
| | 50 | M 8 | 40 | 58 | 200 |
| | | | 50 | 68 | |
| | | M 10 | 40 | 58 | |
| | | | 60 | 79 | |

Light Mounts

Type LRu



| Material |
|---------------------------|
| Base: Black Polyethylen |
| Threaded screw: AVP steel |



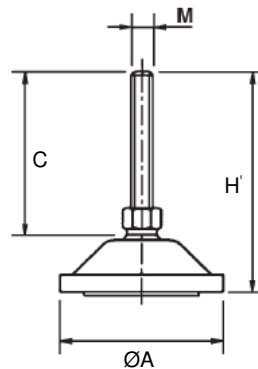
| Type | ØA mm | M | C mm | H mm | Max. load kg |
|------|-------|------|------|------|--------------|
| LRu | 30 | M 8 | 18 | 28 | 150 |
| | | | 24 | 34 | |
| | | | 40 | 50 | |
| | | M 10 | 22 | 32 | |
| | 40 | M 8 | 18 | 28 | 180 |
| | | | 24 | 34 | |
| | | | 40 | 50 | |
| | | M 10 | 22 | 32 | |
| | 50 | M 8 | 18 | 28 | 200 |
| | | | 24 | 34 | |
| | | | 40 | 50 | |
| | | M 10 | 22 | 32 | |

Light Mounts

Type L



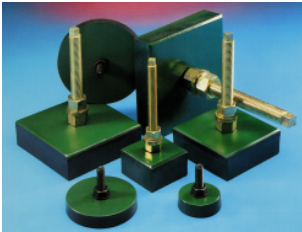
| Material |
|--|
| Base: metal sheet thickness 20/10 zinc plated |
| Threaded screw: Iron 4.8 |



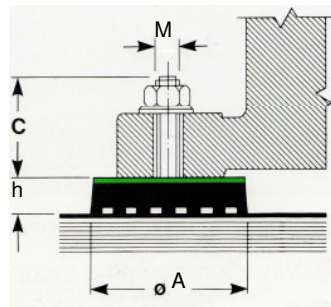
| Type | | ØA mm | M | C mm | H mm | Max. load kg |
|------|------|-------|------|------|------|--------------|
| L | 48-1 | 48 | M 8 | 40 | 55 | 160 |
| | 48-2 | | | 50 | 65 | |
| | 48-3 | | M 10 | 40 | 56 | |
| | 48-4 | | | 60 | 76 | |
| | 58-1 | 58 | M 8 | 40 | 55 | 200 |
| | 58-2 | | | 50 | 65 | |
| | 58-3 | | M 10 | 40 | 56 | |
| | 58-4 | | | 60 | 76 | |

Light Mounts

Type LQ



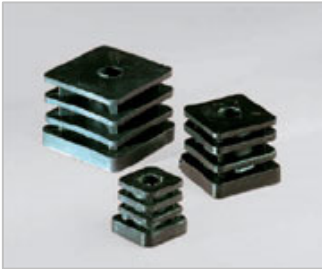
| Material |
|-------------------|
| Synthetic Rubber |
| Zinc plated steel |



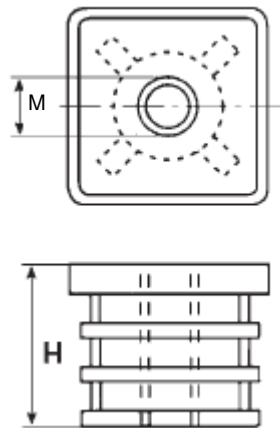
| Type | Ø A | h | C | M | Max. load kg |
|--------|-----|----|----|------|--------------|
| LQ 50 | 50 | 16 | 37 | M 10 | 78 |
| LQ 85 | 85 | | | | 196 |
| LQ 120 | 120 | | | | 390 |

Light Mounts

Type LQI



| |
|-----------------|
| Material |
| Polyethylen |



| Type | Dimensions mm | M mm | H mm |
|-------------|---------------|------|------|
| LQI 25 M 8 | 25 x 25 | M 8 | 21.5 |
| LQI 25 M 10 | | M 10 | |
| LQI 30 M 8 | 30 x 30 | M 8 | 25 |
| LQI 30 M 10 | | M 10 | |
| LQI 35 M 8 | 35 x 35 | M 8 | 26.5 |
| LQI 35 M 10 | | M 10 | |
| LQI 40 M 8 | 40 x 40 | M 8 | 31.5 |
| LQI 40 M 10 | | M 10 | |